

“Specially designed with the wheelchair in mind”



When designing the holiday accommodation at Irton House our primary consideration was to provide excellent quality with full accessibility for all. We have tried to take into consideration the needs of all our guests but those in wheelchairs have had priority. To enable us to offer these very exacting demands we have called on many experts — our existing guests in wheelchairs — to ask for their own personal recommendations. Their suggestions have been adopted to provide a holiday home which in many cases offers facilities better than those at home (so we have been told by many guests!).

The extremely high specification begins with the entire farm offering wheelchair accessibility. On your arrival

at Irton House you are able to drive your car directly to the front door of the property you select. Choose from The Jinney or The Granary which both sleep two people or family accommodation sleeping four, The Swallows. The Martins provides wheelchair accommodation on the ground floor for two and additional rooms upstairs accommodate a further four able-bodied people. There are no steps to the entrance of the property and all the doors are extra width throughout to accommodate wheelchairs. The facility to charge electric wheelchairs has been provided. The entrance halls are uncluttered and spacious providing ease of access for all guests. This spacious feeling is reflected throughout all your accommodation to facilitate full manoeuvrability. Fully fitted anti-static carpet has been used for your comfort



and convenience.

All our special needs guests are delighted with the special washing and toilet facilities in each of the apartments. The tiled shower room is fully centrally heated all day. The shower is situated upon a wheel-over shower deck with grab handles and folding seat to the wall, or shower chair (whichever is your preference). The toilet is on a raised plinth with support arms. The vanity basin enables you to wheel under and all mirrors are situated to provide seated reflection. The shaver-point, like all plugs and switches throughout these properties, is at wheelchair height. The taps are lever operated. We like our guests to feel in control of their comfort so we have fitted thermostatic valves to each radiator which enables you to choose your own comfort zone — Some Like



It Hot! (and there is no additional charge for heating/hot water which is available 24 hours a day).

The kitchen area has been specially designed to enable a wheelchair user to access all facilities. This includes a wheel-under sink area, wheel-under hob unit with controls operated from the front, a side opening oven door at wheelchair height and predominantly low level base units. Once again the taps are lever operated. The pine kitchen area complements the traditional pine dining furniture. The table has been specially chosen as a wheelchair can be drawn underneath.





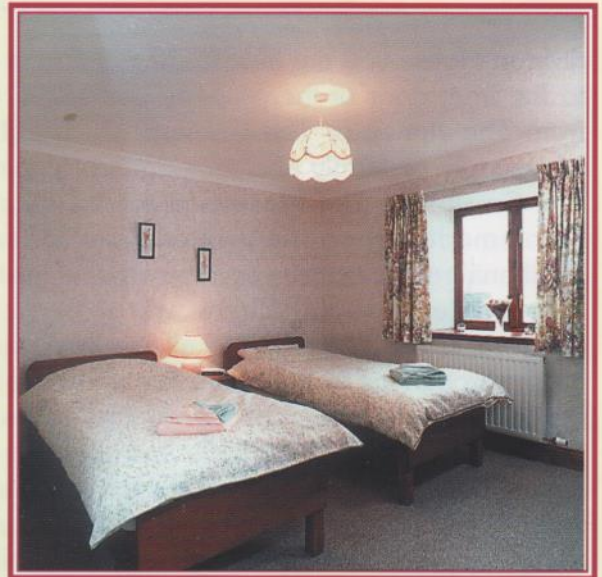
"Accommodation absolutely first class – especially for the 'wheelchair'. We have enjoyed our week very much and have experienced great kindness and help from Joan and Reg!"

J. & B. D., Biddulph, S-o-

The lounge area provides fully flexible seating arrangements. The seating can be moved to suit your own personal requirements. In accommodation with patio areas, access is through French or patio doors with very shallow gradient ramps. Throughout all our accommodation we recognise the importance of

independence with reassurance.

The bedrooms provide low hanging wardrobe space with wheel-under dressing table areas. The beds are fully moveable which enables access from your preferred side. We can offer a hanging grab bar attached to a height adjustable strap — please ask when booking to confirm availability in your selected accommodation. At Irton House we make every effort to accommodate the special needs of our guests. We have purchased an anti-decubitus mattress following a request from one of our holidaymakers. Similarly, a mobile shower/sani chair for use in the shower room has been bought following several requests.



In each of the holiday homes you will find a guests' comments book. In this book we ask our visitors to make recommendations for places to visit, particularly those most suitable for wheelchair users. We firmly believe that only those people in a wheelchair can best say what is, or is not, suitable for wheelchair visitors. Past guests have recommended restaurants, pubs, wheelchair walks, places of interest to visit for you to peruse and consider at your leisure. We hope that when you visit you too will add to the comments book and make use of others' suggestions.

If you have any queries or specific requirements we will endeavour to implement these. Please do not hesitate to ask — if you don't ask, we can't try to help.

We can be contacted on **017687 76380** or write to us

Irton House Farm
Isel, Cockermouth, Cumbria CA13 9ST

By E-mail on
joan@irtonhousefarm.co.uk
 Visit our Website
www.irtonhousefarm.com



"We look forward to welcoming you to Irton House Farm and hope that you too will become one of our extended family of regular guests who return year after year."

